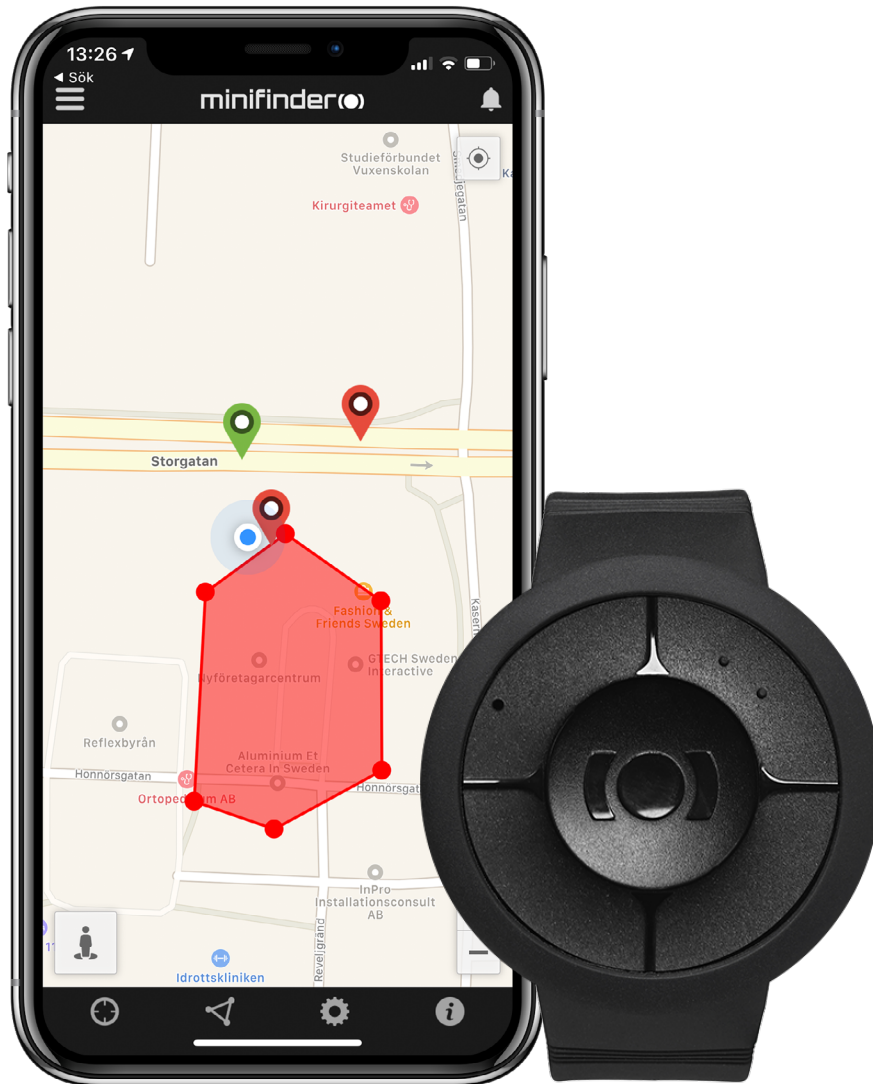


minifinder(●)

# MiniFinder® Nano

Quick guide



## Introduction

The goal of this quick guide is to help you get started with your MiniFinder® Nano and live tracking via MiniFinder GO Tracking System in the shortest possible time.

Before the first use, please charge the device for 4h. Next time device is fully charged after 2h.

Please charge the device with the included USB cable. Connect it to a computer or to a power adaptor, then Nano starts automatically as soon as it gets power.

For more functions and commands, please download the complete user manual:



[minifinder-nano-minifinder-go\\_user\\_guide-en](#)

## Package contents

1. MiniFinder Nano
2. Magnetic charging cable
3. Power adaptor

1



2

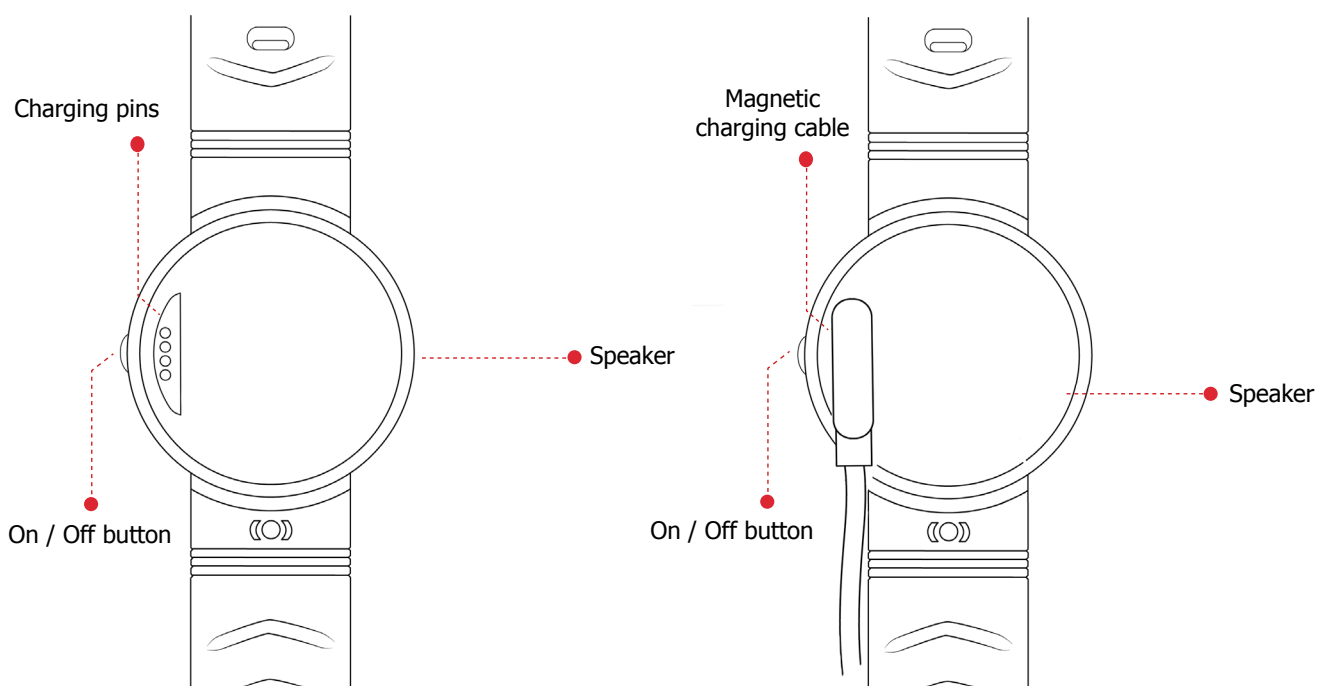


3



## Product overview

The illustration below describes the different parts of the device.

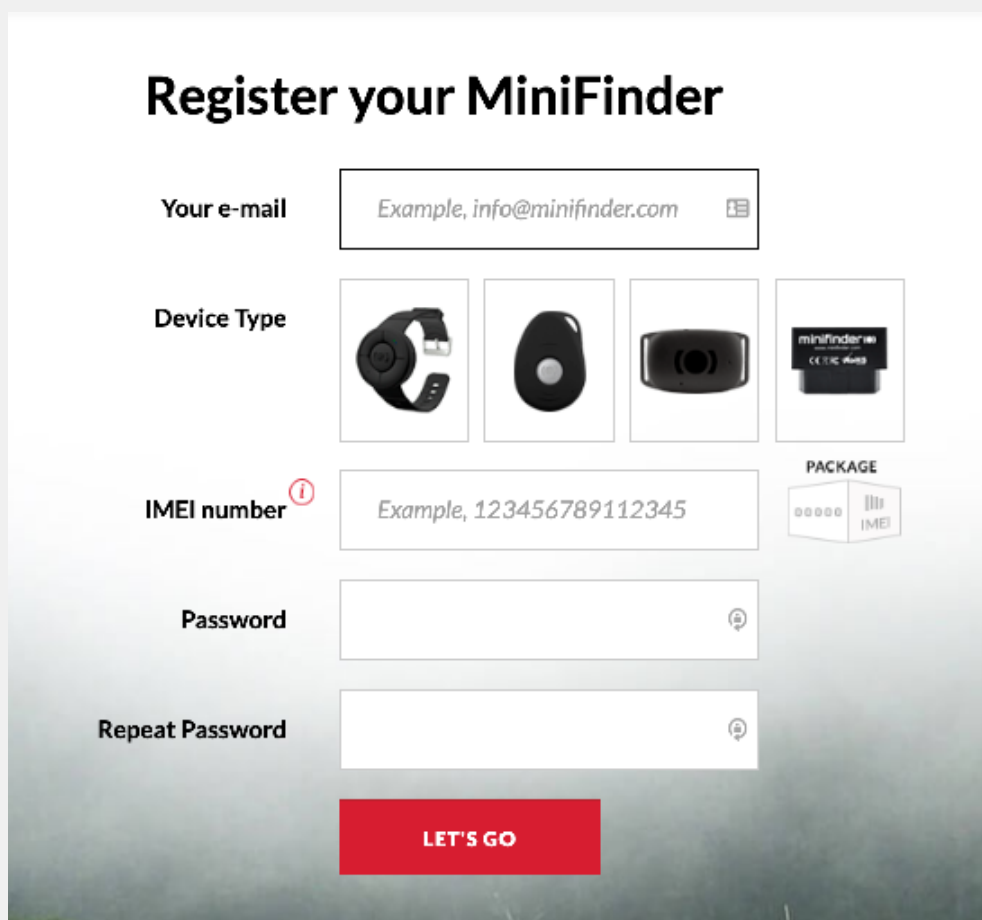


**NOTE!** If you have received a login information for the APP from MiniFinder, please skip the device registration steps 1 and 2 below.

## Device registration

**1**

Visit [my.minifinder.com](https://my.minifinder.com) to create your account and activate your device.



The screenshot shows a registration form titled "Register your MiniFinder". The form includes the following fields and options:

- Your e-mail:** A text input field with the placeholder text "Example, info@minifinder.com" and a calendar icon on the right.
- Device Type:** Four selectable options represented by images: a smartwatch, a small black oval device, a rectangular black device, and a black rectangular package labeled "minifinder CC102 400".
- IMEI number:** A text input field with the placeholder text "Example, 123456789112345" and a small red information icon to its left. To the right of the field is a "PACKAGE" icon showing a box with "IMEI" printed on it.
- Password:** A text input field with a small red information icon to its right.
- Repeat Password:** A text input field with a small red information icon to its right.

At the bottom of the form is a red button labeled "LET'S GO".

**2**

Before starting the tracking for the first time, please make sure to place the device outdoors for 5-10 minutes for faster fixing against GPS satellites. Start the device by pressing and holding the on/off button for 3 seconds.

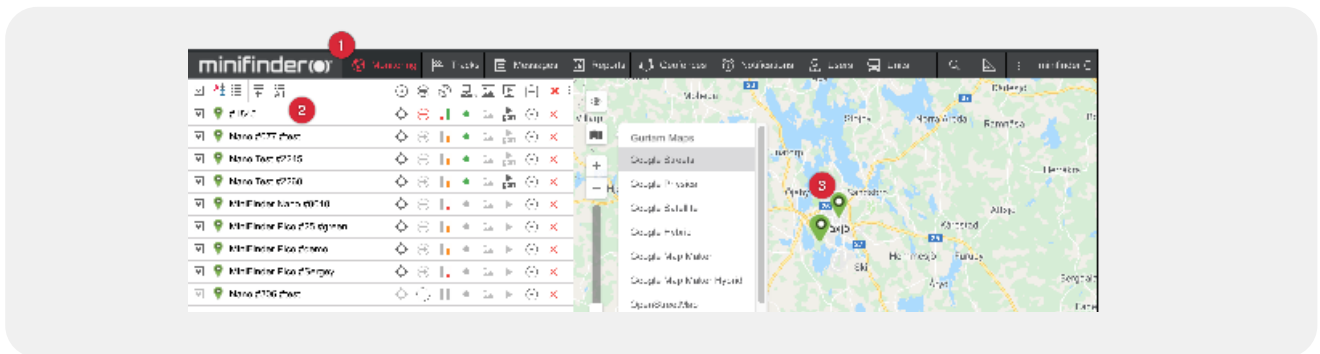
## Real time tracking via MiniFinder GO

After subscribing to MiniFinder GO tracking service, you can log in to <https://go.minifinder.com> with your login details or download the MiniFinder GO app from the Apple App Store or Google Play. Start the app or open your browser to log in.



Here is how to track through web browsers on your computer:

Select (1) Monitoring in the top menu and (2) then click on your device to display its (3) real-time position on the map.



For more information about the various parts and functions of the map, please see "MiniFinder GO Quick Guide" via the link below.

**minifinder** ®

**Support:**

[support@minifinder.com](mailto:support@minifinder.com)

**Phone:**

0470-786833

**Website:**

[www.minifinder.com](http://www.minifinder.com)