

# Tracking via MiniFinder GO

## Quick Guide

English




# What is MiniFinder GO

MiniFinder GO is a server-based software for monitoring of GPS trackers. MiniFinder GO processes and stores location information from real-time track transmitters presented on map. The system provides you with easy-to-use maps, report and analysis tools that can be used for monitoring, security and optimization. This guide clearly describes the structure of the system and the most used functions.

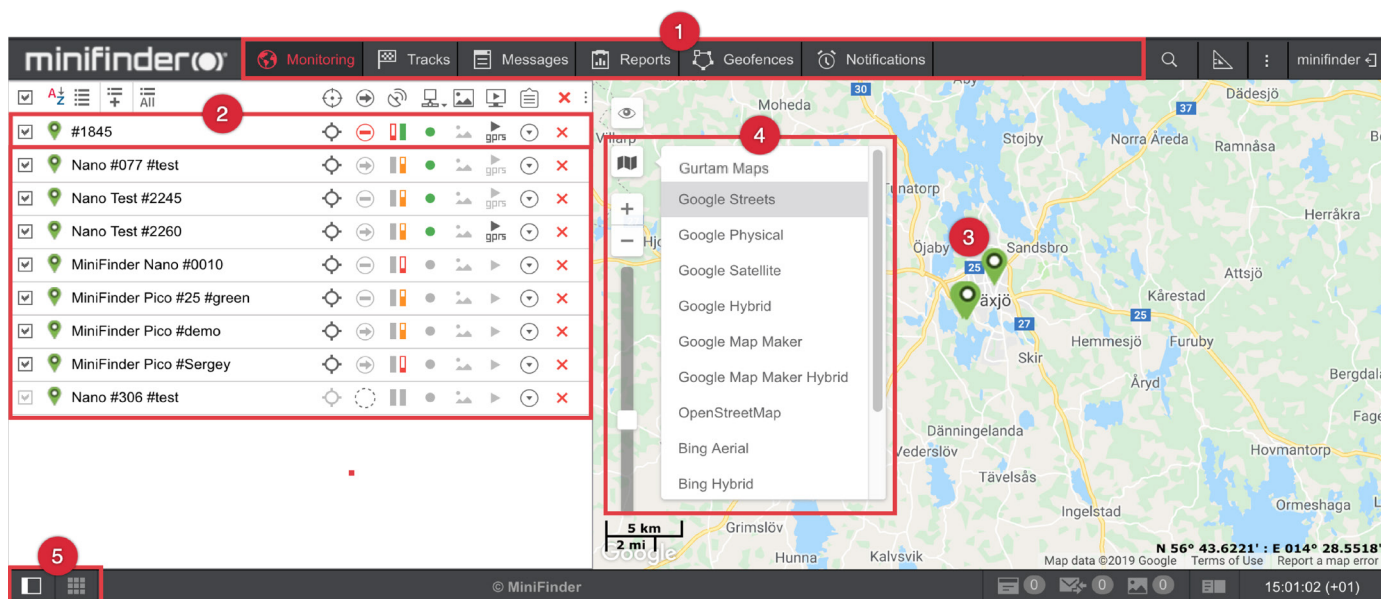
## Login

Start your browser and visit [go.minifinder.com](http://go.minifinder.com). Enter the user name and password, and then click the "Enter" button to log in.

 Login information is created in connection with the registration of the product or sent separately on delivery.

## System Overview

After logging in, you will see that the MiniFinder GO system consists mostly of the map. The system is divided into various parts and functions that you should know about.



- 1 Top menu consists of: Monitoring, Tracks, Messages, Reports, Geofences, and Notifications.
- 2 The list shows, depending on the tab: units (GPS trackers), objects or submenus.
- 3 Each unit is represented by an icon on the map. By clicking a device in the list, the map will focus on the device's icon.
- 4 MiniFinder GO supports different types of maps. On the left side of the map, there are map tools and map selector.
- 5 Buttons for displaying / hiding the work area (list) and mini map.

# minifinder ®

**Support:**

[support@minifinder.com](mailto:support@minifinder.com)

**Telephone:**

+46(0)470-786833

**Website:**

[www.minifinder.com](http://www.minifinder.com)