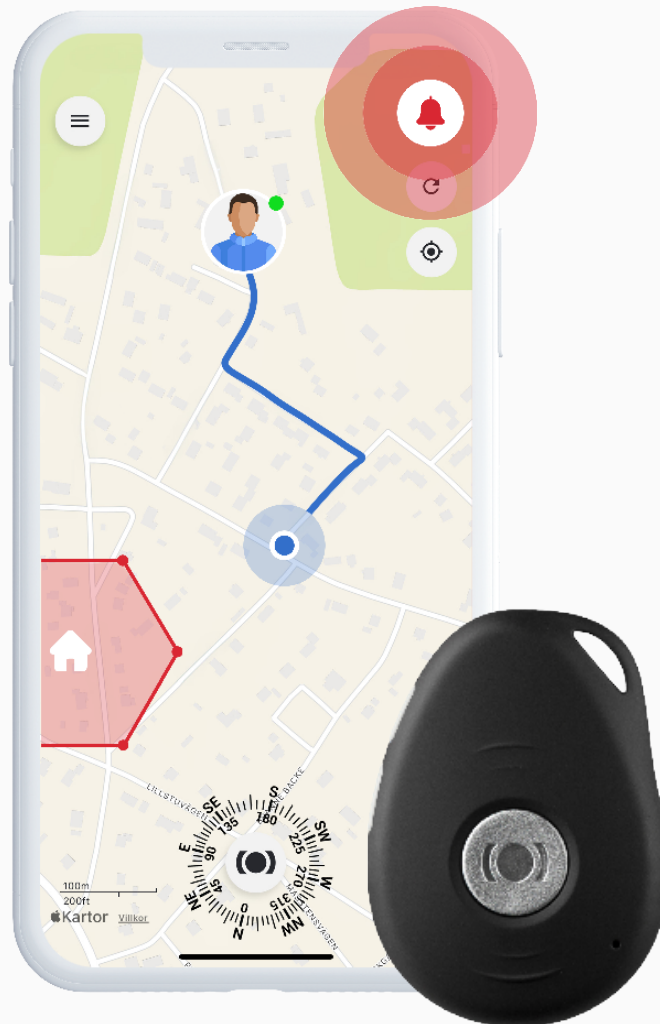


# MiniFinder® Pico

User manual



# Table of Contents

## MiniFinder Pico

<u>Package Contents</u> .....	1
<u>Product Management</u> .....	1
<u>Explanation of LED Lights</u> .....	2
<u>Explanation of Voice Notifications</u> .....	2
<u>Specifications</u> .....	20

## App: MiniFinder Live

<u>Getting Started</u> .....	3
<u>Overview</u> .....	4
<u>Menu</u> .....	5
<u>Add a New Device</u> .....	6
<u>Select a Subscription</u> .....	6
<u>Device List</u> .....	7
<u>Device Panel &amp; Settings</u> .....	8
<u>Call the Device</u> .....	11
<u>Alarm</u> .....	12
<u>Create a Geofence</u> .....	13
<u>Tags</u> .....	14
<u>Add a Contact</u> .....	15
<u>Share Location with a Contact</u> .....	17
<u>Reminders</u> .....	18
<u>Help</u> .....	19

## Package Contents

1 MiniFinder Pico

2 Magnetic Charging Cable

3 Power Adapter

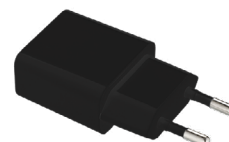
1



2



3



## Product Management

### 1 Charge Before First Use

Please charge the device for at least 4 hours before using it for the first time

### 2 While Charging

The blue LED light will remain solid during charging.

Once the device is fully charged, the blue LED will turn off

### 3 Charging the Device

Attach the magnetic charging cable to the charging pins on the device

### 4 Power On

Press and hold the On/Off button for 1 second to turn on the device

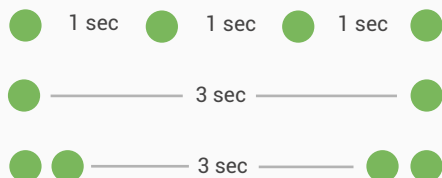
### 5 Power Off

Press and hold both SOS button and On/Off button for 2 seconds



# Explanation of LED Lights

## GREEN LED:



Rapid flash = Calling

Single flash = Searching GSM network

Double flash = Connected to GSM network

## RED LED:



Slow flash = Charging

Steady light = Fully charged

## BLUE LED:



Slow flash = Searching for GPS signal

Double flash = Connected to satellite

Blinks four times = Connected to WiFi

# Explanation of Voice Notifications

## A Your mobile alarm is charging

Your MiniFinder Pico has been plugged in to a power source and is now charging

## B Battery is low, please recharge your battery

Your MiniFinder Pico is running out of battery and you should charge it soon. This will be repeated 3 times

## C Your alarm has been activated, press the SOS button to stop

The SOS-alarm has been activated. Press the MiniFinder button to cancel the alarm before it starts calling

**D Fall alarm has been activated, press the SOS button to stop**

Your MiniFinder Pico has activated the fall alarm. Press the MiniFinder button to cancel the alarm

**E Calling contact number X**

The device is now calling the authorized phone numbers you set up in the app. It will proceed with the next phone number if the current one doesn't respond.

## Getting Started – Download the MiniFinder

To begin using your **MiniFinder Pico**, you first need to download the **MiniFinder Live App**.

If you're viewing this guide on your mobile device, simply click the Google Play or App Store icons to go directly to the download page. Alternatively, open the App Store or Google Play, and search for "MiniFinder Live" to install the app manually.



## MiniFinder Live Introduction

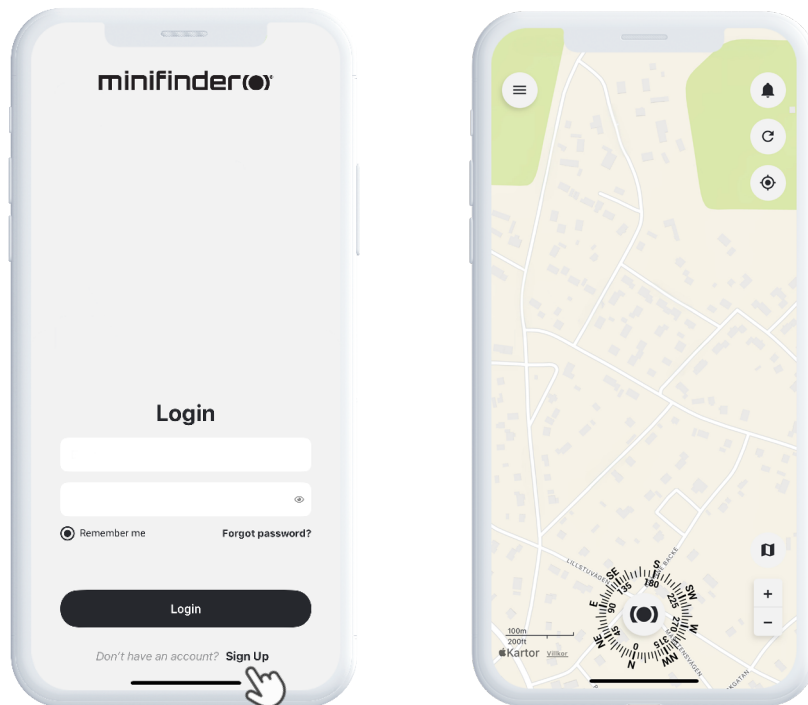
Welcome to **MiniFinder Live** – a system designed to provide real-time positioning, smart alerts, and valuable insights to enhance personal safety and independence. Paired with the **MiniFinder Pico**, this platform gives you access to intelligent alarm functions, notifications and useful tools to support your safety.

This manual provides step-by-step guidance on how to use MiniFinder Live effectively. Follow the instructions to get started and make the most of your experience.

## App Overview

Once the app is installed, the first step is to create an account. Tap **Sign Up**, then enter your email address and set a password to get started.

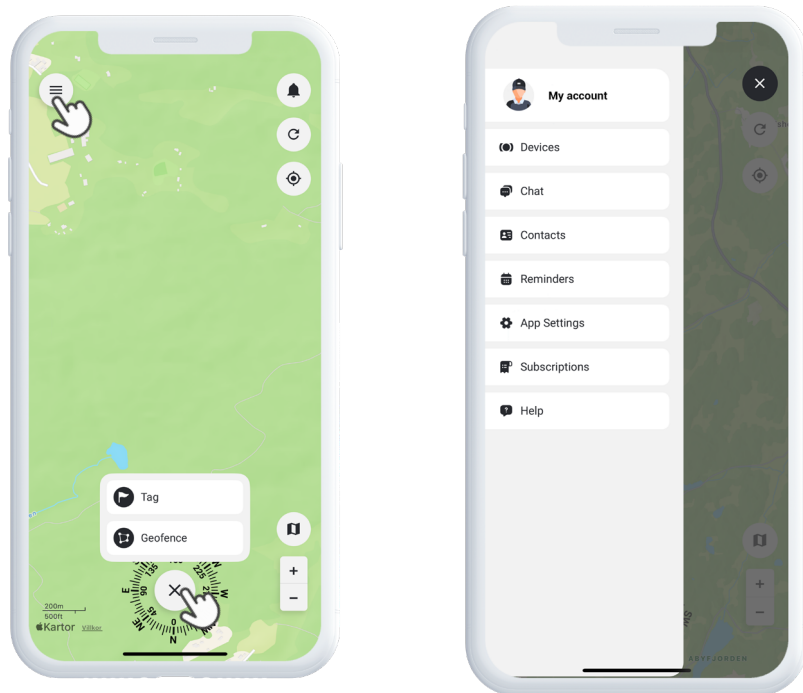
Once logged in, you'll be presented with an app overview, which is displayed on the right-hand side of your screen.



# Menu

To open the **quick menu**, tap the MiniFinder button. This gives you fast access to key features like Tags, Geofence, and the Scanner tool.

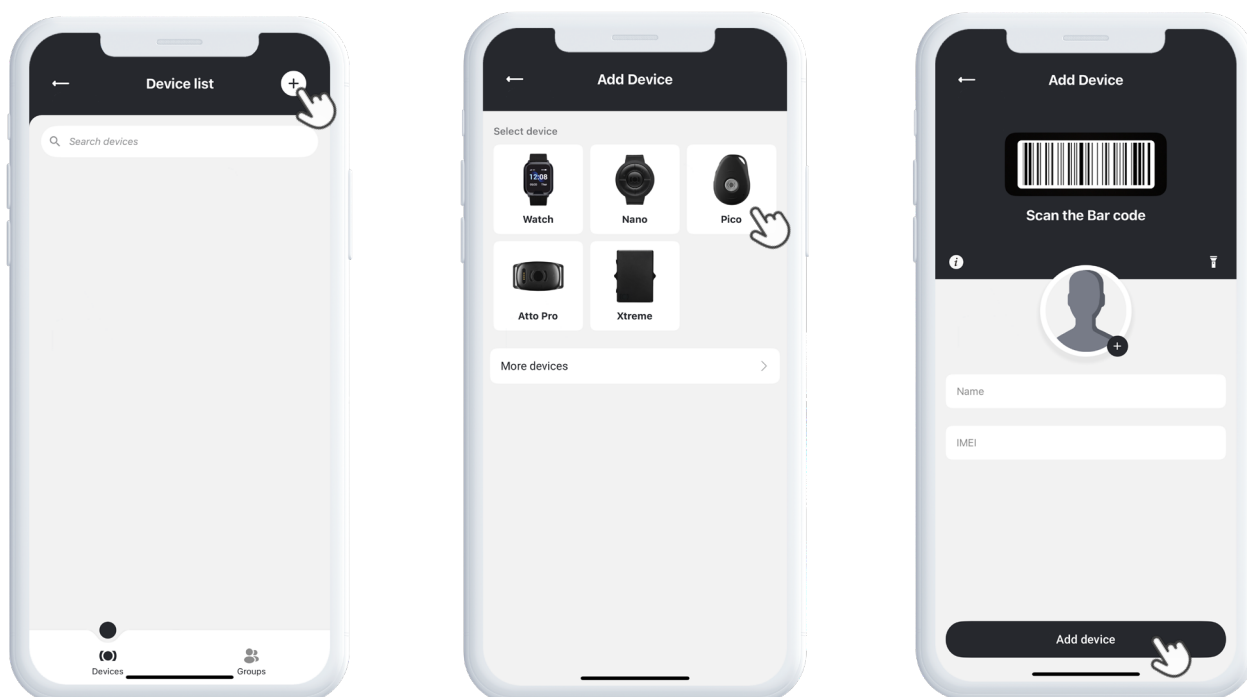
For additional options, use the **main menu** located in the top left corner of the screen. By tapping this menu, you can access your profile, devices, contacts, reminders, and more.



## Add a New Device

To add a new device to your account, go to the menu in the top left corner of the screen and select **Devices**. Then tap the **plus sign**. You will now be able to choose which type of device you want to add. Once you have made your selection, scan the barcode on the packaging, or enter the IMEI code manually.

Finally, choose a name for your MiniFinder and click **Add Device**.



## Choose a subscription

You'll now automatically be redirected to the subscription selection page. Choose the subscription plan that best suits your needs and follow the steps to complete the purchase.



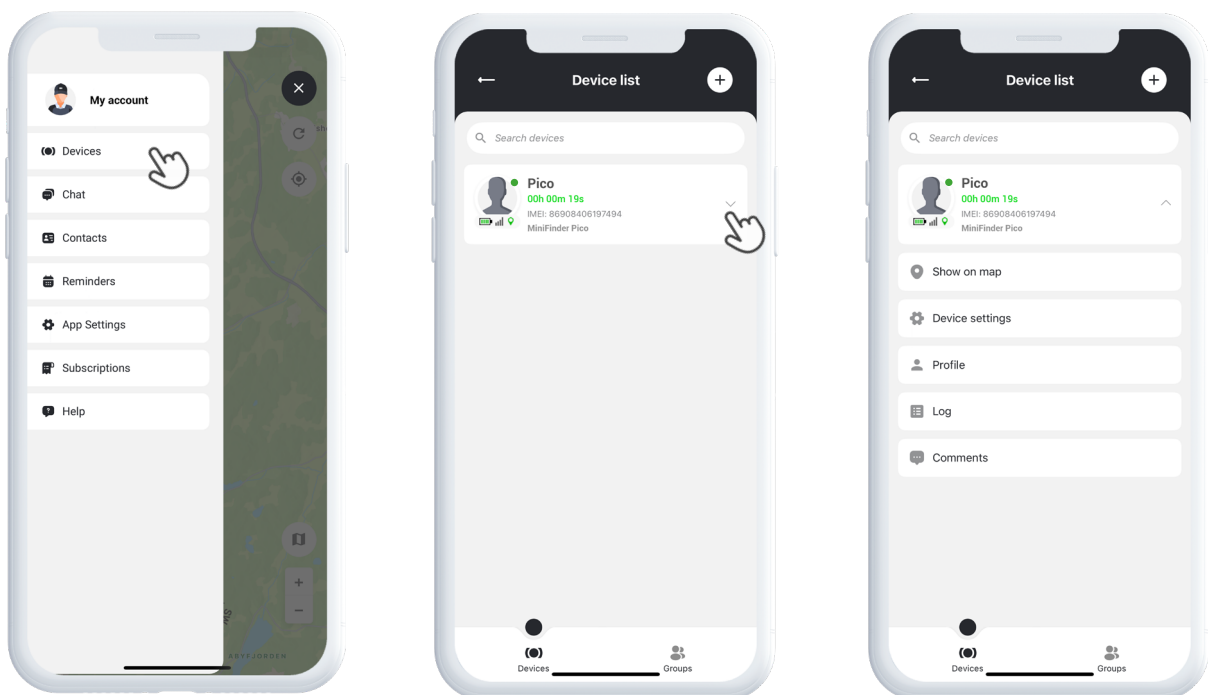
# Device List

You can now find your device in the Device List, located under **Devices** in the main menu.

By expanding the drop-down menu on your device (tap the arrow on the right), you'll access several options, including:

- A Show on Map** – View your device's current location
- B Device Settings** – Adjust positioning and alert preferences
- C Profile** – Edit device information
- D Log** – View event history
- E Comments** – Add notes related to the device

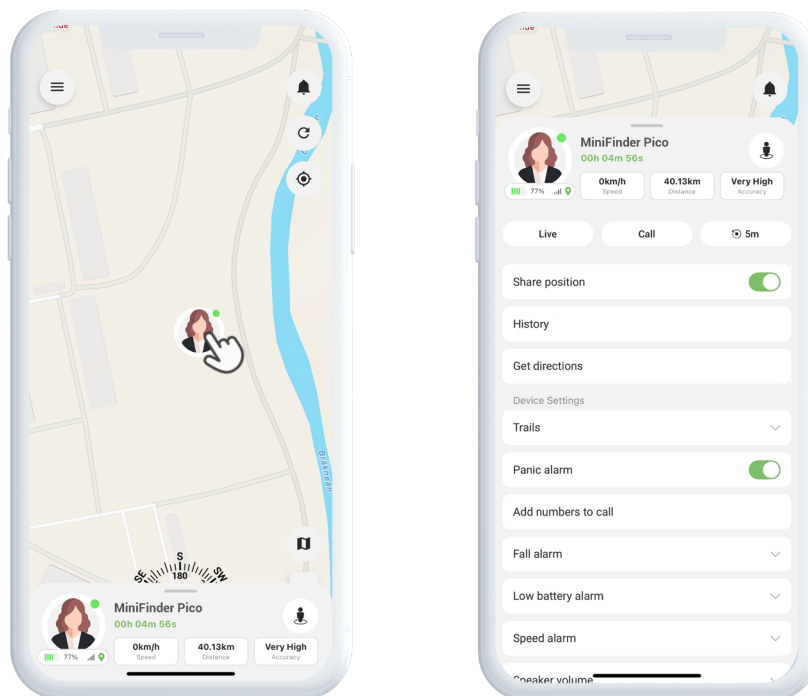
These tools help you manage and monitor your device with ease.



## Device Panel & Settings

The **Device Panel** provides valuable insights into the device's location history and movement patterns, giving you a clearer overview of activity over time.

To open the Device Panel, simply tap the **device icon** directly on the map. This will open a detailed view with data such as recent routes, timestamps, and other important metrics.



### Update Interval

Here you can choose how often the device should send its location to the app. A shorter interval means more frequent updates and more accurate real-time tracking, but it may also consume more battery. A longer interval saves battery but provides location updates less frequently.

Next to the update interval setting, you will find the **Live Tracking** option. When this mode is activated, the device updates its location every 10 seconds for a 10-minute period. This makes it possible to follow movements in real time for a limited duration, for example when extra accuracy is needed. When live tracking is active, a green indicator will appear to the left of the Live button.

## Share position

Share position



When Share position is enabled, the device's position is shared with the contacts you have previously selected. If you turn it off, the device immediately stops sharing its position with all contacts, without requiring you to change each contact manually.

## Street View



In the upper-right corner of the panel, you will find a Street View icon. When you click it, a view opens showing the surroundings of the device's current location. This allows you to easily see what the area looks like in reality, directly on the map.

## History

History

In this view, you can select specific dates to see where the device has been. By following the history, you can retrace movement patterns and view the device's positions step by step for the chosen period.

For a clearer overview, the heatmap highlights the places where the device has been most frequently. The color scale ranges from light to dark, with red marking the most frequently visited locations. This makes it easy to quickly identify areas where the device regularly spends time.

## Trails

Trails



Here you can set how long the track of the device's movements should remain visible on the map, for example 10 minutes, 30 minutes, or another time period. You can also choose the color of the track, making it easier to distinguish it from other devices or previous routes.

## Alarms

Fall alarm



Panic alarm



In this view, you can manage the device's various alarm functions. The panic alarm activates the large SOS button on the MiniFinder Pico. By enabling the panic alarm and linking phone numbers for the device to call, the wearer can press and hold the button to quickly call selected contacts in an emergency.

You can also activate the fall alarm and low battery warning. Start by turning on the alarms you wish to use, then adjust their sensitivity. The scale ranges from 1 to 9, where 1 means low sensitivity and 9 means very high sensitivity. This way, you can customize the alarms to your needs and always be sure to receive reliable warnings at the right time.

## Get Directions

[Get direction](#)

By tapping this function, you will receive directions to the device's current location. This makes it easy to quickly find your way, whether you are walking, cycling, or driving.

## Add numbers to call

[Add numbers to call](#)

In this view, you can add the phone numbers that the device will automatically call in the event of an alarm. These numbers act as preset recipients, ensuring that help can be reached quickly when needed.

## Volume

- A Speaker Volume** = Adjusts the volume of the built-in voice in the MiniFinder Pico, which communicates system messages, alarms, and similar notifications.
- B Call Volume** = Allows you to adjust the volume during calls, making it easier to hear the person on the other end.
- C Ringtone Volume** = Just like a mobile phone, the MiniFinder Pico rings when someone calls it. You can change the ringtone volume by adjusting the corresponding slider.

## Beacons

[Set up Beacons](#)

Beacons are used to improve positioning accuracy when the device is indoors. GPS signals can sometimes be less precise indoors, resulting in reduced accuracy. By installing and activating a Beacon, you can link it to its location on the map, helping the device report a more reliable position even inside buildings.

## Power Saving Zones

[Set up power saving zones](#)

By connecting your MiniFinder to your WiFi network and associating the network with its location on the map, a Power Saving Zone is created. Power Saving Zones extend battery life while keeping the device connected and ready to use when it leaves your WiFi network. Similar to Beacons, Power Saving Zones also improve indoor positioning accuracy.

## Restart

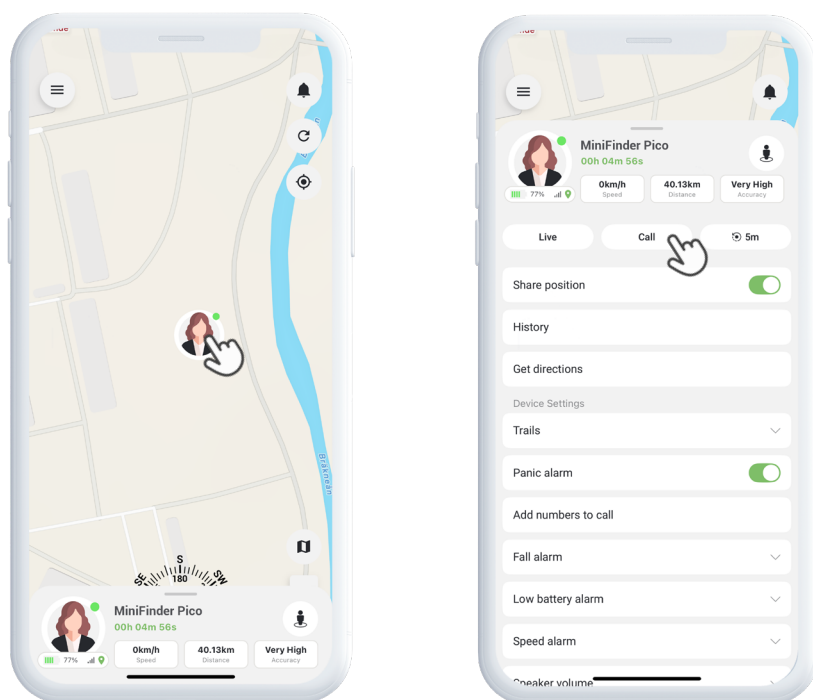
[Restart](#)

By selecting this function, you restart the device. This can be useful if the device is not responding as expected, or if you want to perform a quick reboot to restore normal operation.

## Call the Device

To call your MiniFinder, tap the **device icon** directly on the map to open the Device Panel. Then, press **Call** to start the call.

Please note that in some cases your MiniFinder may have an international phone number. This is because the device is designed to roam freely on the best available mobile network, regardless of its location. Therefore, check with your mobile operator to confirm the applicable rates for calls to international numbers, so you are aware of any potential charges.



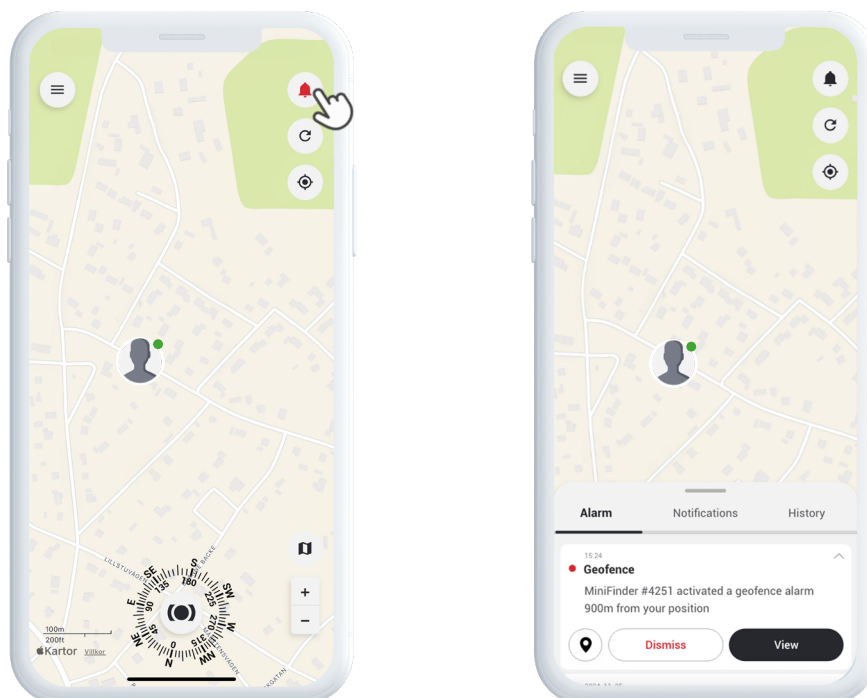
# Alarm Notifications

To access your alarm notifications, tap the flashing bell icon located in the top right corner of the screen. This section is divided into three categories:

- 1 **Alarms** – Displays critical alerts that require immediate attention
- 2 **Notifications** – Shows general system messages and updates
- 3 **History** – Allows you to view all past alarms and notifications for reference

Within each category, you can dismiss an alarm to turn it off, view more information, or tap the pin icon to see the exact location on the map.

If you are sharing your MiniFinder's location with someone, it is also recommended to click **Acknowledge/Resolve**, so that they can see that the alarm has been handled.



## Alarm Management

If multiple numbers are added to the device, it is important that the person answering the call presses **1** on their keypad to confirm the call. If this is not done, the device will continue calling the next number in the list until someone confirms.

## Creating a Geofence

To create a geofence, tap **Geofence** in the quick menu. Choose whether to draw your own geofence using a polygon or a circle.

If you select polygon, mark the desired area by placing and connecting points on the map. Then, select the device you want to link to the geofence and define whether alerts should trigger when the device enters, exits, or both.

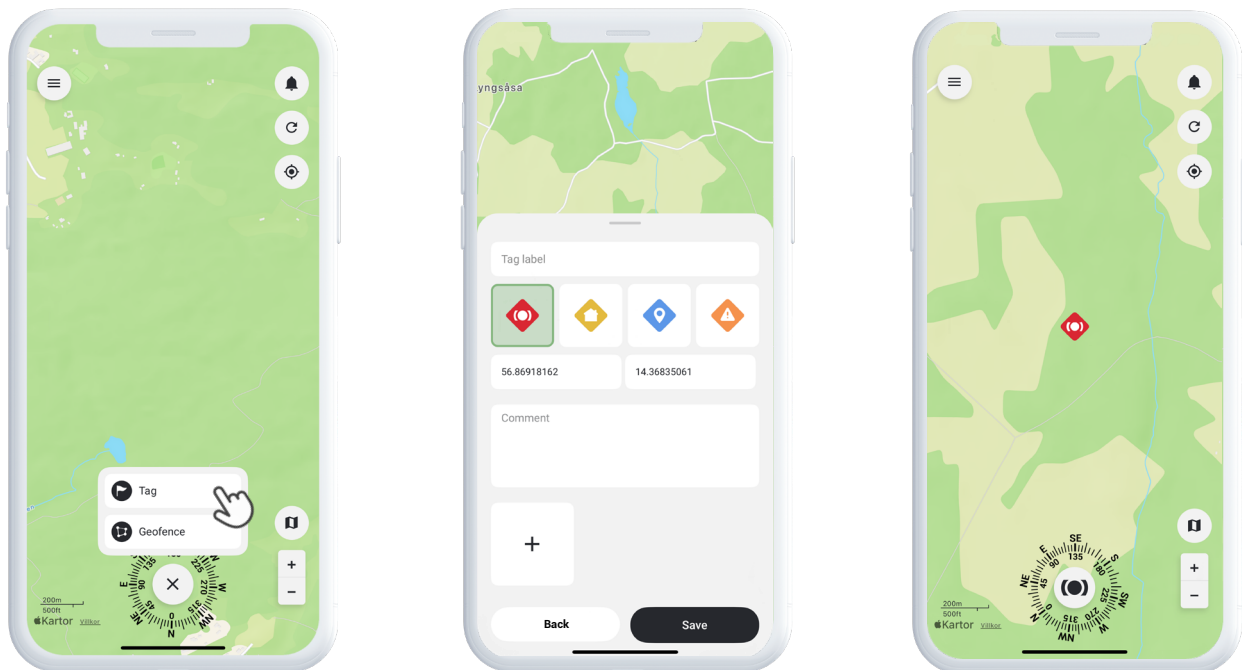
Finally, give your geofence a name, choose a color, and **tap Save**.



# Tags

Tags allow you to highlight specific locations on the map that are important for your location setup.

To create a tag, **select Tags** in the quick menu and move the pointer to the desired location on the map. Choose the type of tag, add a label, and include any additional information if needed. Tap **Save**, and the tag will instantly appear on the map.

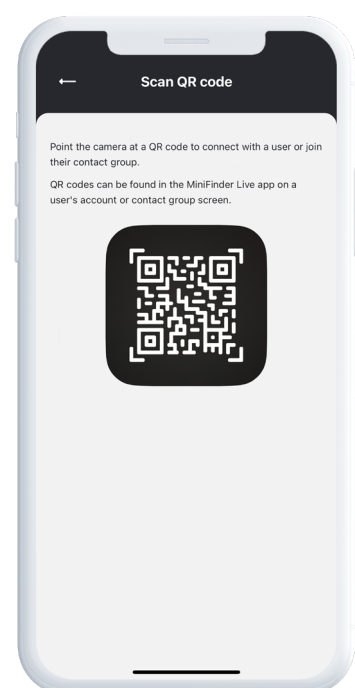
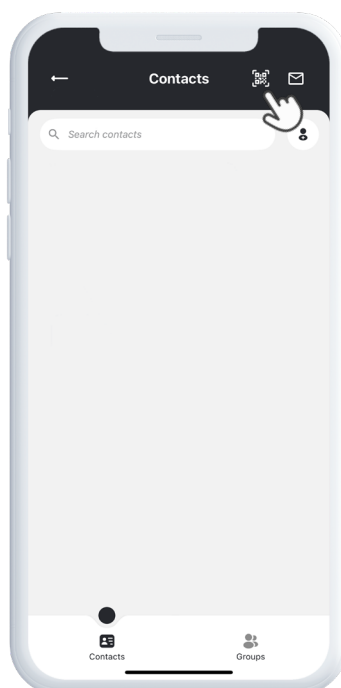
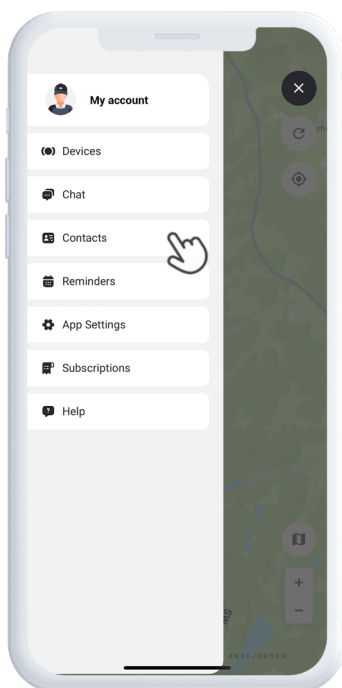




# Add a Contact

To share your MiniFinder's location with others, or to view a contact on the map, you must first add each other as contacts in the app.

- 1 Make sure both users have the app open and are logged in.
- 2 Go to the menu and select **Contacts**. Tap the **QR code** icon in the top-right corner.
- 3 The other person opens their **profile** and taps the **QR code** icon in the top-right corner.
- 4 Scan the code – the contact is added instantly.



Alternatively, you can add a contact manually:

- 1 Select **Contacts** in the menu.
- 2 Tap the icon to the right of the search bar and enter the person's email address or phone number. Then, tap the magnifying glass to search.
- 3 When the correct contact appears, confirm that you want to add the person. Your contact request will be sent immediately.

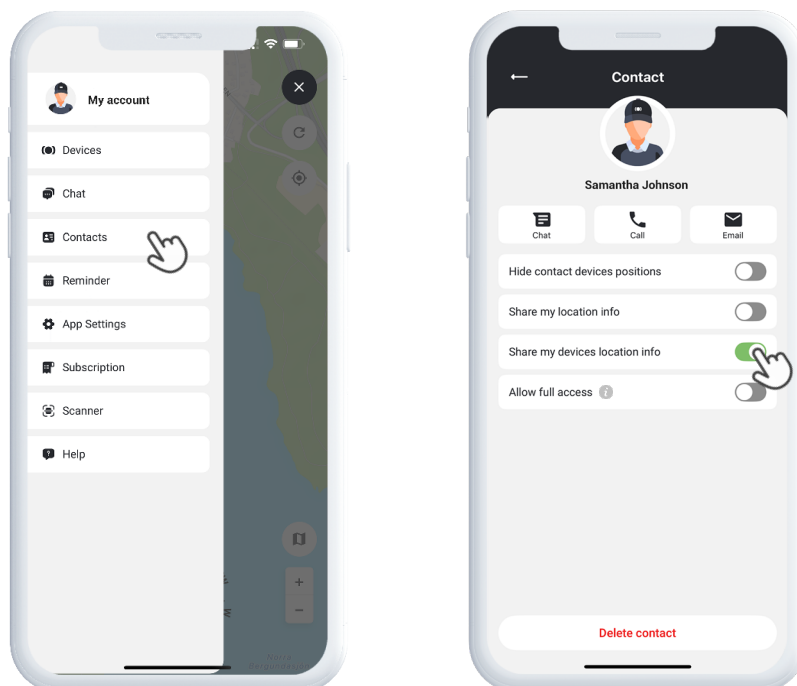
Before you can start sharing location or information, the other person must first accept your request.



## Share Location with a Contact

Sharing your location with a family member, colleague, or friend can increase safety and improve communication. To share your location with a contact in the app, start by tapping the menu in the upper-left corner. Then go to **Contacts** and select the person you want to share your location with.

When the contact is open, choose whether you want to share your own location or the location of a specific device. You can also choose to grant **full access**, which allows the contact to view the device's settings and all available information linked to it. Once you confirm the settings, the location is shared and visible to the recipient.



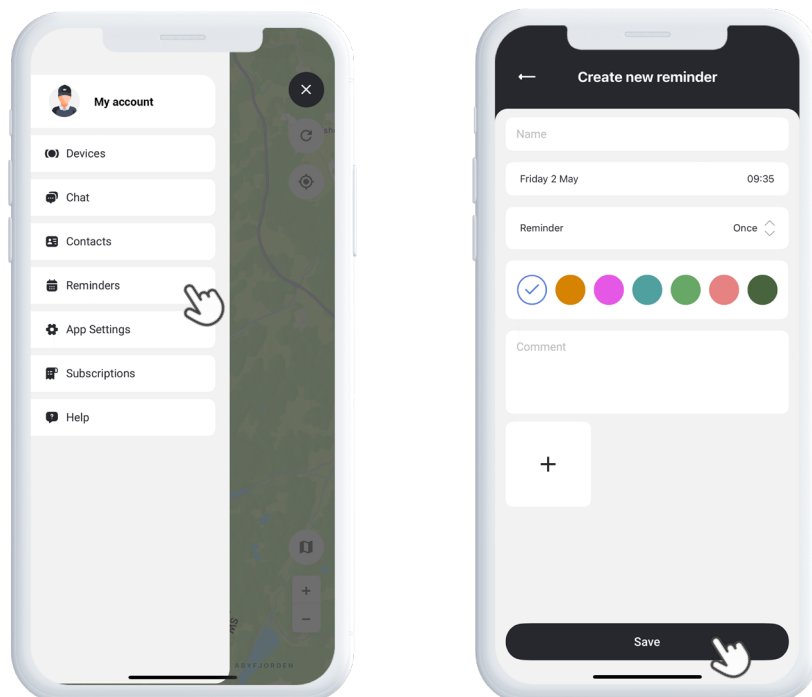
# Reminder

MiniFinder Live includes a built-in calendar feature to help you stay organized.

To create a reminder, tap the **main menu** and select **Reminder**. From here, you can schedule important events such as medication reminders, daily routines, or any other tasks.

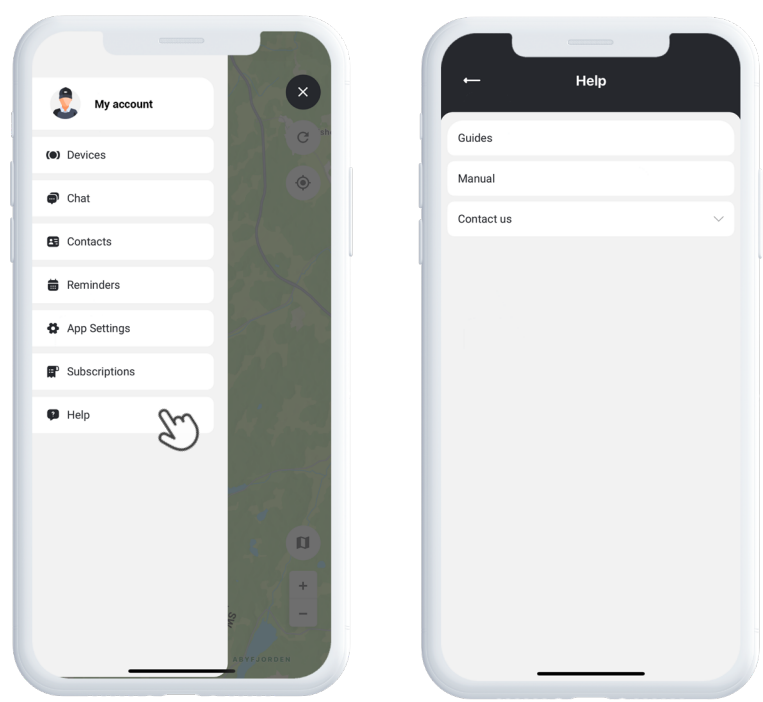
Choose the date, set how often the reminder should repeat, and tap **Save**.

Your reminder will now appear in the calendar, helping you keep track of key activities with ease.



# Need More Help?

For support and feature documentation, go to the **Help** section in the main menu. There you will find step-by-step guides and user manuals covering the key features of MiniFinder Live, designed to help you make the most of the platform’s full potential.



# Specifications

Dimensions	60 mm x 41 mm x 16 mm
Weight	40g
Battery Life	36-40h with 5 minutes interval
Connectivity	LTE: B1, B3, B7, B8, B20 GSM:900/1800 MHz
Power Source	5V DC 1.0A
SIM	Preinstalled
Voice call	Yes
Fall sensor	Yes
Sensor	Accelerometer, 3-axis

## Memory

The device is equipped with a built-in 16 MB flash memory. This memory stores GPS data when GSM network coverage is unavailable (e.g., in rural areas, indoors, underground locations, etc.). The stored location data is automatically transmitted as soon as GSM coverage is restored.

## Safety Declaration

This equipment has been tested and found to comply with safety certification requirements according to the specifications of EN Standard: EN60950-1: 2006 + A12: 2011.

## Important Safety Instructions

Read these instructions carefully.

Keep these instructions for future reference.

Heed all warnings.

Follow all instructions.

Do not tamper with your MiniFinder®.

Do not use abrasive cleaners to clean your MiniFinder®.

Do not place your MiniFinder® in a dishwasher, washing machine, or dryer.

Do not expose your MiniFinder® to extremely high or low temperatures.

Do not use your MiniFinder® in a sauna or steam room.

Do not leave your MiniFinder® in direct sunlight for extended periods.

Do not place your MiniFinder® near an open flame.

Do not attempt to disassemble your MiniFinder®; it contains no user-serviceable parts.

## Recycling Information

The symbol on the product or its packaging indicates that this product must be disposed of separately from household waste at the end of its service life. Please be aware that it is your responsibility to dispose of electronic equipment properly at designated recycling centers, in order to help conserve natural resources.