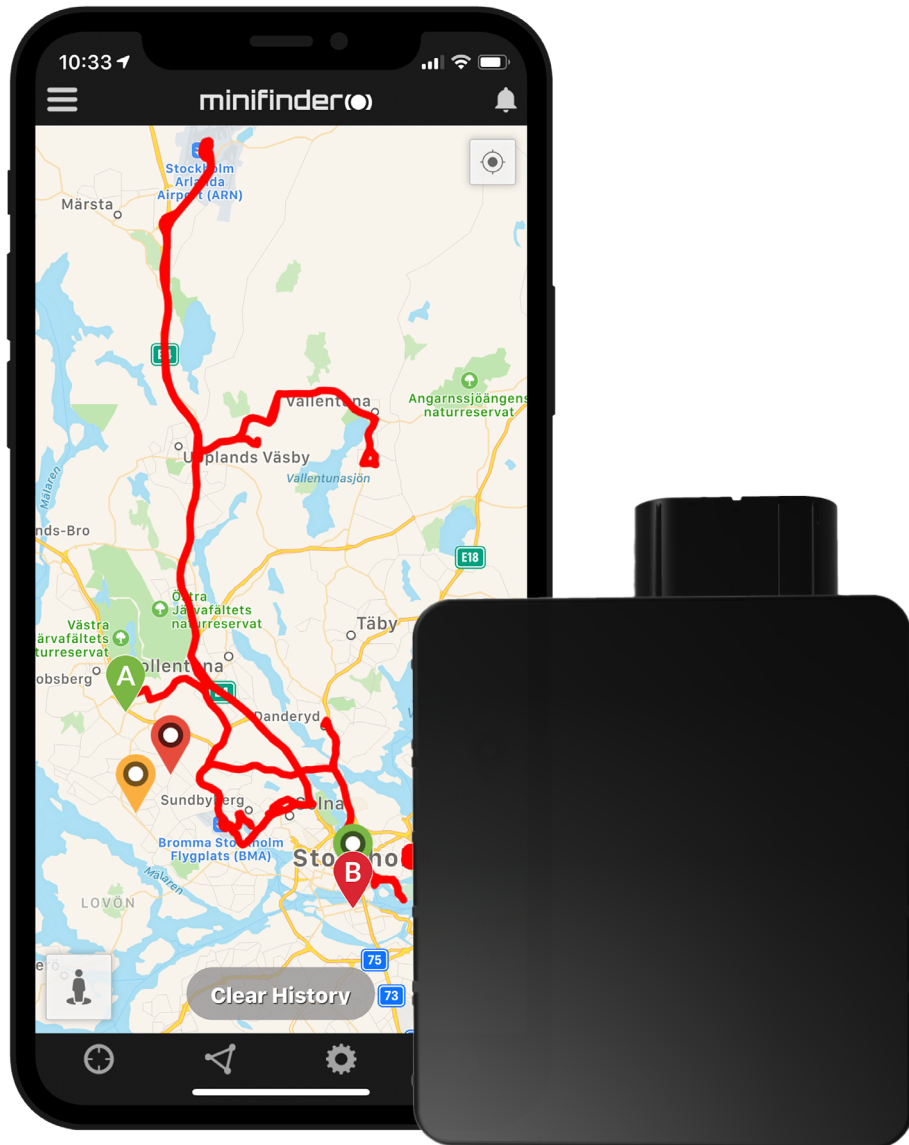


minifinder®

MiniFinder® Xero

Activation guide



Introduction

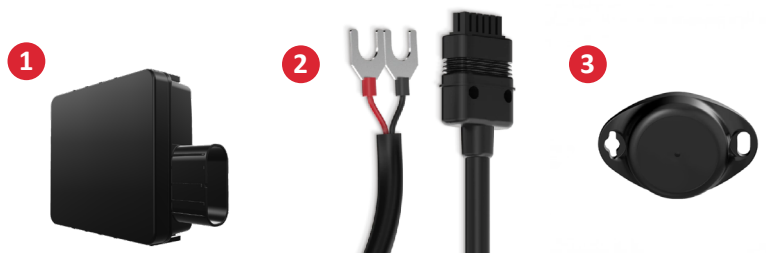
This quick guide is intended for you who own a MiniFinder® Xero GPS tracker and want to quickly get started with tracking through the MiniFinder GO tracking system or with MiniFinder Triplog.

You can find more features and commands in the comprehensive user manual:

 [minifinder-xero-minifinder-go_user_guide-en](#)

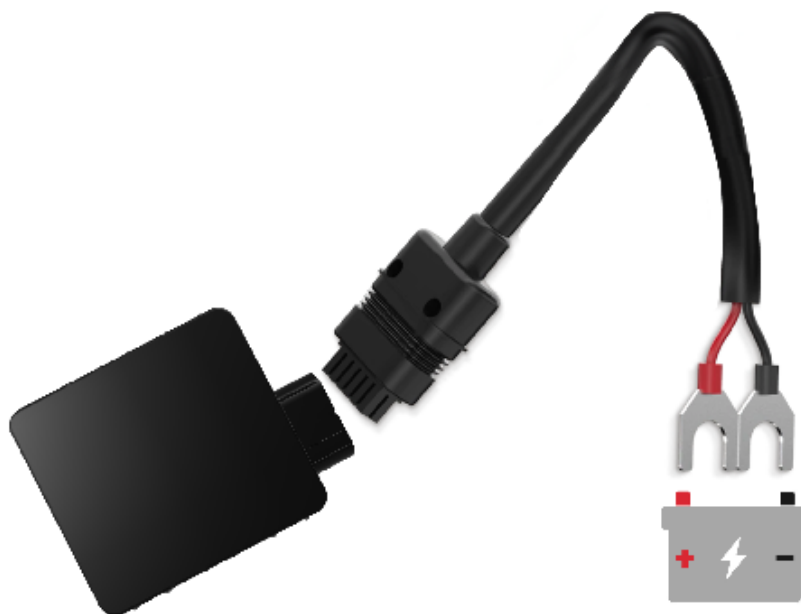
Package contents

- 1 MiniFinder Xero
- 2 Xero power adapter
- 3 Temperature sensors (**accessory**)



Installation

The following illustration describes how to install a MiniFinder® Xero, which is easily connected to the vehicle's power supply using U-type cables. Please note that the MiniFinder® Xero comes with a pre-installed SIM card that includes a data plan according to your order.

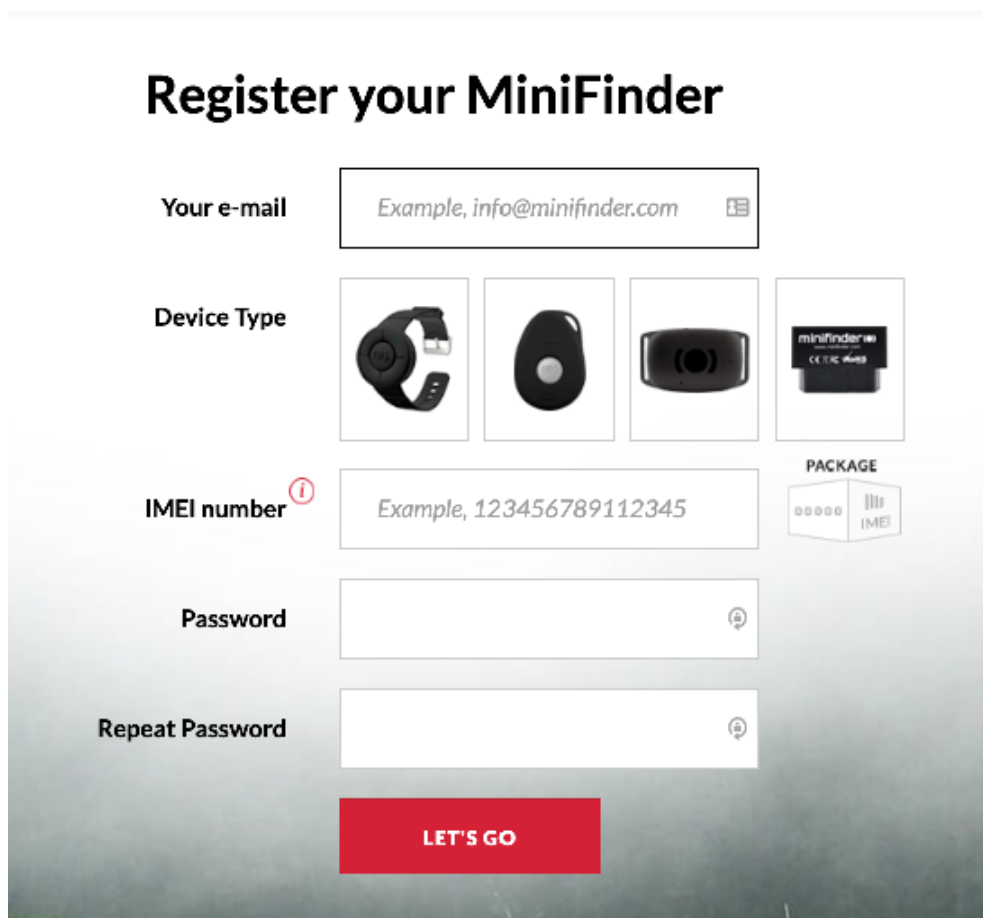


NOTE! If you have received login credentials for the app from MiniFinder, you can skip device registration in steps 1 and 2 below.

Device registration

1

Please go to my.minifinder.com to create your account and activate your device.



Register your MiniFinder

Your e-mail

Device Type

IMEI number ¹

PACKAGE

Password

Repeat Password

LET'S GO

The registration form includes a 'Device Type' section with four options: a wristwatch, a small black oval device, a rectangular black device, and a black rectangular package labeled 'minifinder CE 114C A009'. The 'IMEI number' field has a red '1' icon above it. The 'PACKAGE' section shows a small image of the device in its packaging with 'IMEI' printed on it.

2

Connect the device to the vehicle's 12V/24V battery using the provided cables. Before you start tracking for the first time, make sure to power on the device for 5-10 minutes for faster GPS satellite acquisition.

Real time tracking via MiniFinder GO

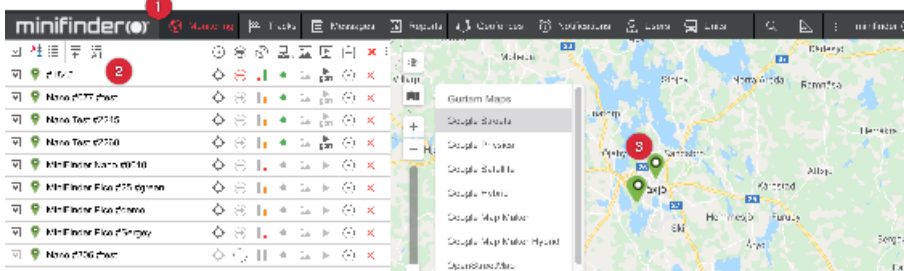
1. Real time tracking

Log in to <https://go.minifinder.com> with your login details or download the MiniFinder GO APP from the Apple App Store or Google Play. Start the app or open your browser to log in.



Here is how to track through web browsers on your computer:

Select (1) Monitoring in the top menu and (2) then click on your device to display its (3) real-time position on the map.



For more information about the various parts of the map and functions, please see "MiniFinder GO Quick Guide" attached later in the document No.3, or that you have received along with the login.

MiniFinder Triplog

Log in to triplog.minifinder.com with your login details or download the MiniFinder Trip Log APP from the Apple App Store or Google Play. Start the app or open your browser to log in.



Here is how to manage your trips through web browsers on a computer:

The screenshot shows the MiniFinder web interface. At the top, there are navigation links for 'Autosrapport', 'Svenska', 'English', and 'Logga in'. The main content area is divided into two sections. On the left, there are form fields for 'Inloggad som:' (demo10), 'Fordon:' (MiniFinder Zaptr (MXX) #test), 'Från datum:' (2018-11-01 00:00), and 'Till datum:' (2018-11-02 23:59). A 'VISA' button is below these fields. On the right, there is a map showing a route. Below the map, there are buttons for 'Sammanfoga', 'Exportera till PDF', and 'Exportera till Excel'. At the bottom, there is a table with the following columns: #, ID, Starttid, Startplats, Sluttid, Stoppplats, Total tid, Mittal start, Mittal stop, Körsträcka, Uppdragstyp, and Kommentar. The table contains 5 rows of trip data.

#	ID	Starttid	Startplats	Sluttid	Stoppplats	Total tid	Mittal start	Mittal stop	Körsträcka	Uppdragstyp	Kommentar
1		2018-11-01 08:55:41	0.33 km from Ebände Västertorn	2018-11-01 07:05:43	0.39 km from Tipshallen	00:10:02	15098.79	15100.84	8.88 km		
2		2018-11-01 07:11:02	0.39 km from Tipshallen	2018-11-01 07:32:19	0.82 km from Vänersborgsgrän, Alvesta, SE	00:11:17	15105.64	15122.64	17 km		
3		2018-11-01 07:34:19	0.82 km from Vänersborgsgrän, Alvesta, SE	2018-11-01 08:49:33	Storgatan, Hälmslätt, SE	01:15:14	15122.64	15238.64	116 km	Privat	Kundbesök
4		2018-11-01 10:11:57	Rådhusgatan, Hälmslätt, SE	2018-11-01 11:09:26	N 56° 48.9019' ; E 13° 54.2787'	00:57:29	15238.64	15328.64	70 km	Business	
5		2018-11-01 11:28:56	N 56° 48.8790' ; E 13° 54.4109'	2018-11-01 12:00:09	0.48 km from Tipshallen	00:39:13	15308.64	15369.64	61 km		

- 1 Object settings. You can set up a device name, car mileage, driver's name, etc.
- 2 Choose an object.
- 3 Choose a certain period of time.
- 4 After you have chosen a certain period of time, click "EXECUTE" to view the trip logs.
- 5 Choose between "Private" and "Business" to define the trip type.
- 6 Make important notes related to certain trips.
- 7 Generate an auto report of a particular date and sent it to certain emails.

minifinder ®

Support:

support@minifinder.com

Phone:

0470-786833

Website:

www.minifinder.com